

# Panel Discussion Malaysian Cities Fighting Climate Change

- Iskandar Malaysia
- Kuala Lumpur
- Putrajaya
- Seberang Perai



**Chin Siong Ho,**

UTM-LOW CARBON ASIA RESEARCH CENTRE  
DEPARTMENT OF URBAN AND REGIONAL PLANNING  
FACULTY OF BUILT ENVIRONMENT  
UNIVERSITI TEKNOLOGI MALAYSIA



**UTM**  
UNIVERSITI TEKNOLOGI MALAYSIA

45%  
Reduction in  
GHG Emissions  
Intensity of GDP  
by 2030

# Malaysia

Land Area: 332,000 km<sup>2</sup>  
Population: 28.28 million (2010)  
GDP: 247.5 billion USD (2010)



# CLIMATE CHANGE IMPACT IN MALAYSIA

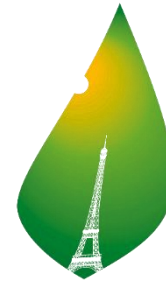
- Cities, home to over half of the global population and responsible for more than 70 percent of global greenhouse gas emissions, are particularly vulnerable to the impacts of climate change
- Cities are impact and action hotspots for climate change.
- *Climate change impact lead to the loss of lives, property damages, heat stroke and crops production*

# **Sustainable and low carbon development for MALAYSIAN CITIES**

- *From climate policy to broader sustainable development implementation.*
- *Incorporating SDG 2030*
- *-Looking into co benefit rather than solely on carbon reduction*

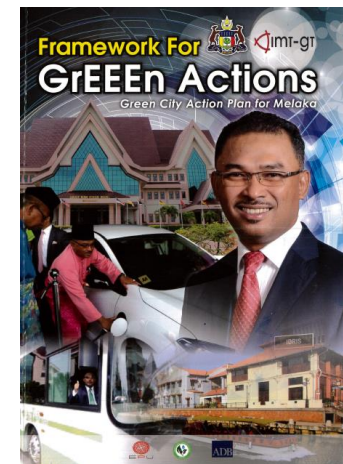
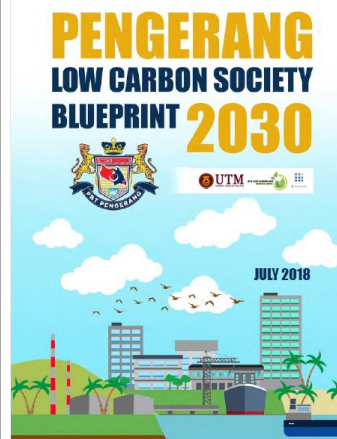
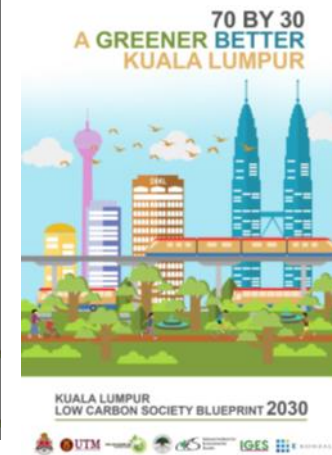
# CLIMATE CHANGE MITIGATION and ADAPATATION CITY LEVEL POLICY DOCUMENT

City-based climate change policies argued to be more **Effective, realistic, feasible and relatively easy to deliver.**



COP21-CMP11  
**PARIS 2015**  
UN CLIMATE CHANGE CONFERENCE

SUSTAINABLE DEVELOPMENT GOALS



*“Separation of policy formulation from implementation is fatal”.*

Pressman & Wildavsky, 1984

## **POLICY IMPLEMENTATION is IMPORTANT..**

because

- A policy becomes effective only as it is implemented.
- The process of policy implementation and policy-making should not be separated; during policy formulation and design, its implement-ability should always be kept in view.
- Policies are not only formulated but also implemented, monitored and evaluated.

# S2A

SCIENCE TO ACTION

## S2A: OUR PRINCIPLES

- **SOCIETY AT THE CORE**
- Decoupling, decarbonising + co-benefits
- Holistic : techno-fixes + people-centric, socially-rooted programs + environmental countermeasures

WE BELIEVE IN  
SCIENCE TO  
ACTION  
IN MAKING

LOW CARBON  
SOCIETY

A REALITY



# Importance of S2A (SCIENCE to ACTION)

## for objective and informing green Low carbon policy

### EVIDENCE based

- Science provide evidence and objective based result for Policy making

### OPTIMAL CHOICE

- Scenario based research help better understanding – Baseline modelling

### PARTICIPATORY

- Science facilitates Consensus Building / FGD identifying local issues

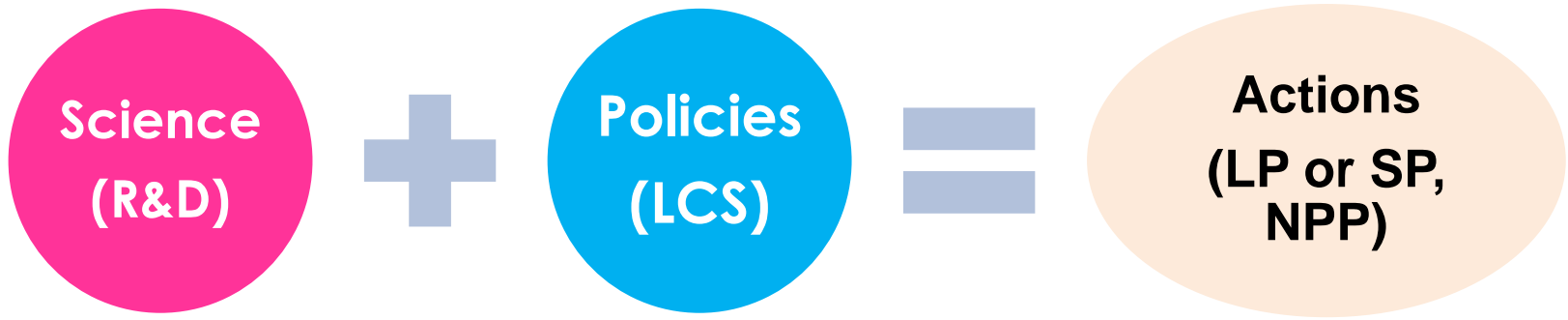
### INTERDISCIPLINARY

- Highly technical issues needs interdisciplinary approach.

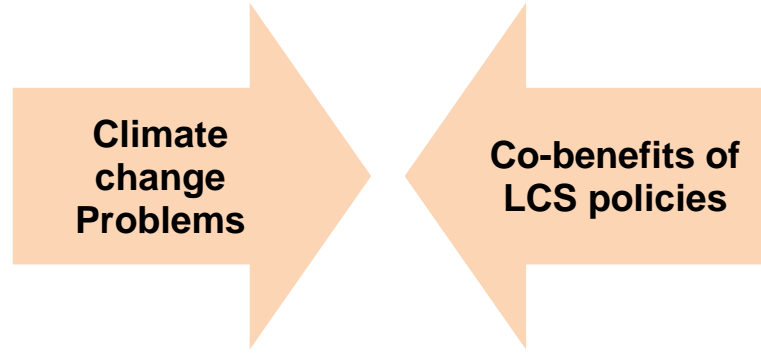
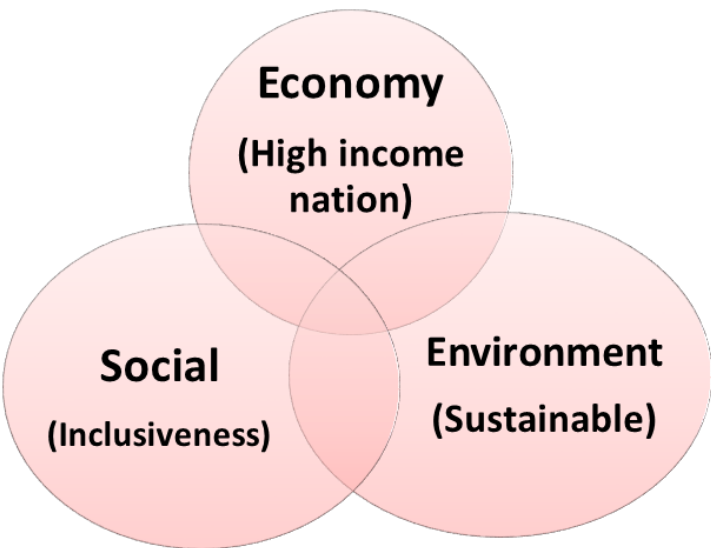


# Harnessing contribution of Science and Technology

## Sustainable development approach/ Climate Actions



**Key Elements of Sustainable Development**  
= PRO GROWTH, PRO JOB , PRO POOR and PRO ENVIRONMENT



Promoting resilient, low carbon, resource efficient and socially inclusive development

# **LOW CARBON CITIES PLANNING AND IMPLEMENTATION**

*Low carbon development planning and implementation are taken in an iterative process with ongoing monitoring in targets and policy implementation*

# THE IMPLEMENTATION OF LOW CARBON CITIES DEVELOPMENT: KEY QUESTIONS

## WHAT?

**Action, sub-action, measures and programs** in your cities

## WHEN?

The **implementation timeline for each programs** (short term, medium term and long term)

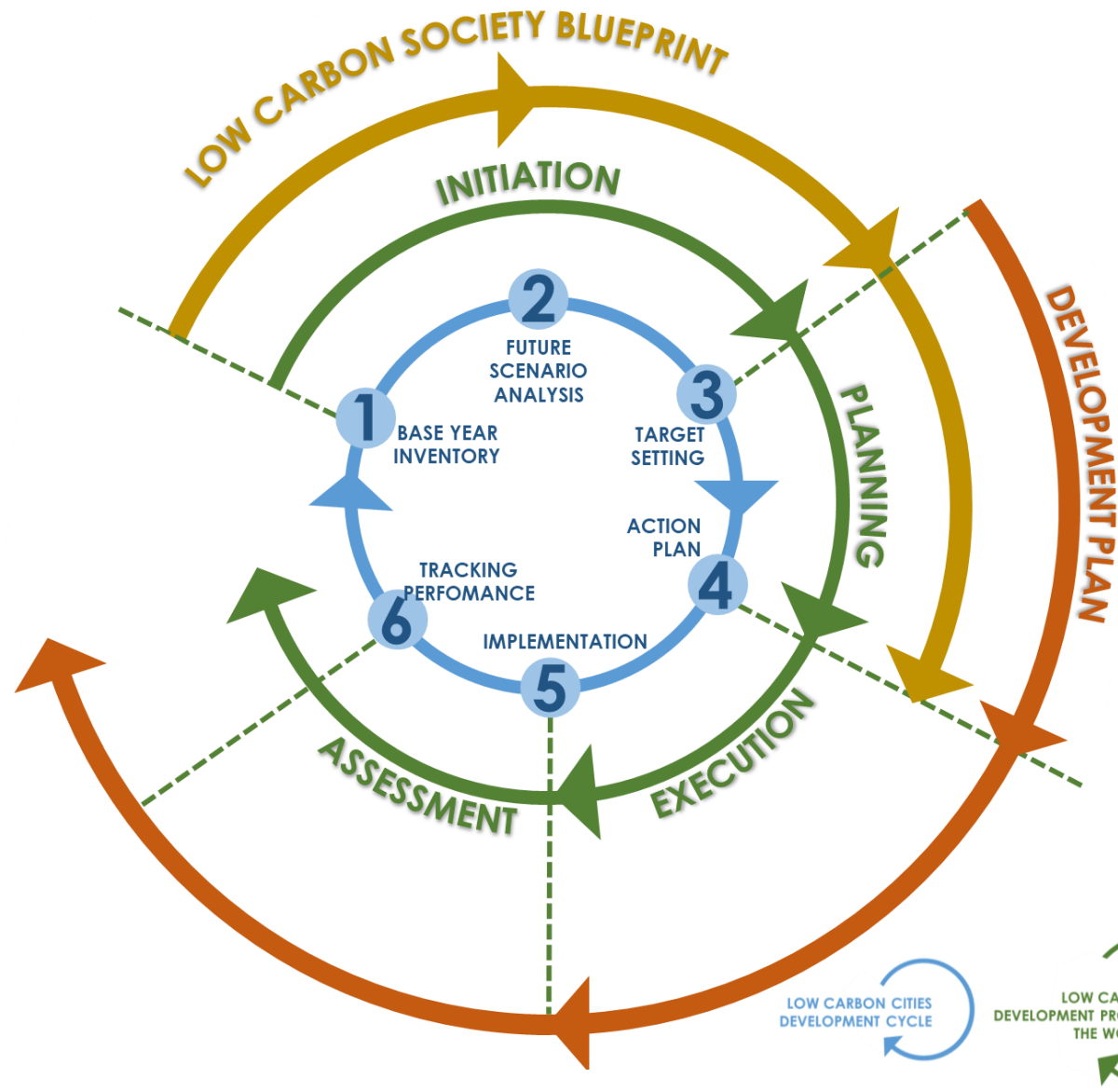
## WHO?

The **identification of potential actor/ caretaker** for each program and supporting agencies (Office in charge/ Supporting agency/ implementer).

# 2 Options for Low Carbon Planning – STAND ALONE OR MAINSTREAMING



# THE IMPLEMENTATION OF LOW CARBON CITIES



At present, **MOST OF THE MALAYSIAN CITIES** is at **Stage 4** of the Low Carbon Development Cycle. This stage is crucial to ensure smooth progression towards implementation of the LCS programs outlined and hence the achievement of the reduction target

# DISCUSSION

- 1** What are the current Low carbon initiatives undertaken by Malaysian cities
- 2** What are the barriers of planning and implementation of LCS measures?
- 3** What are your future climate change actions/strategies?